

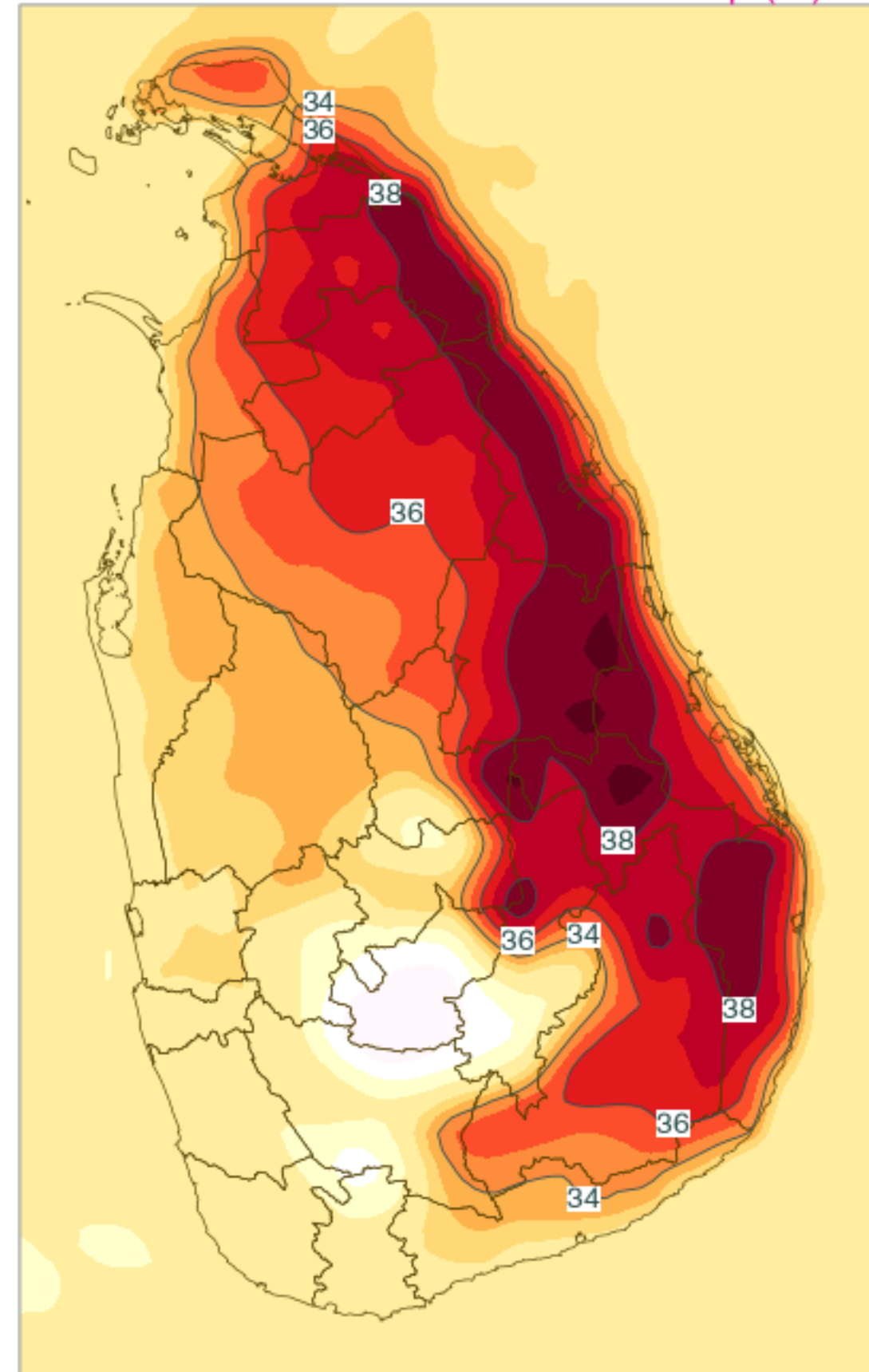
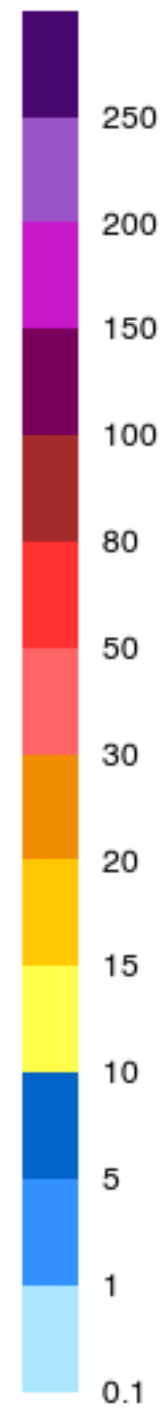
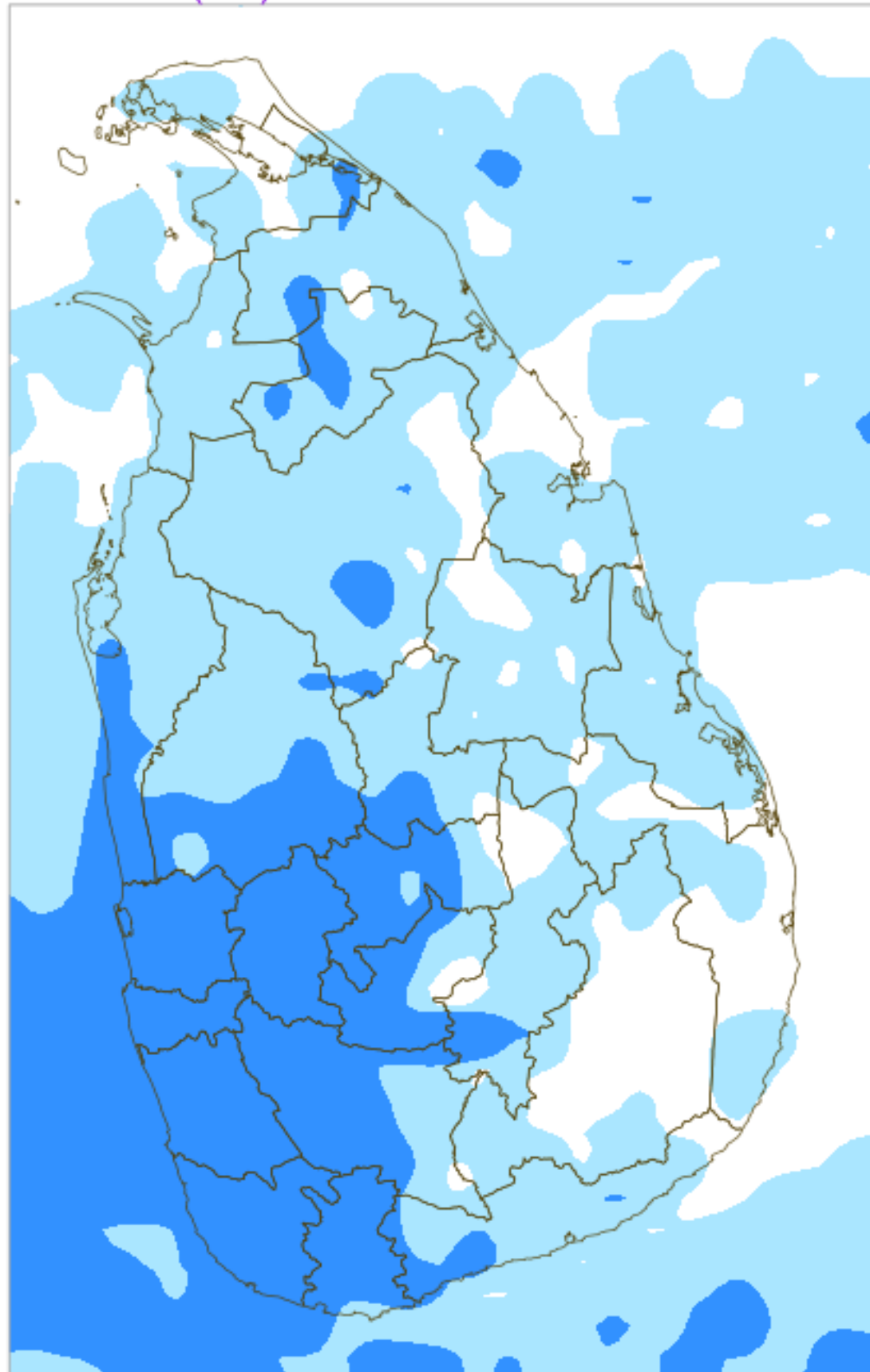
24H RAINFALL (mm) & MAXIMUM 2m TEMPERATURE (°C) FORECAST (24h)

For 24 hours ending at 8.30AM 06 MAY 2024

(Based on ECMWF (op1) model initialized at 12UTC 04 MAY 2024)

Rainfall (mm)

Max 2m Temp. (°C)



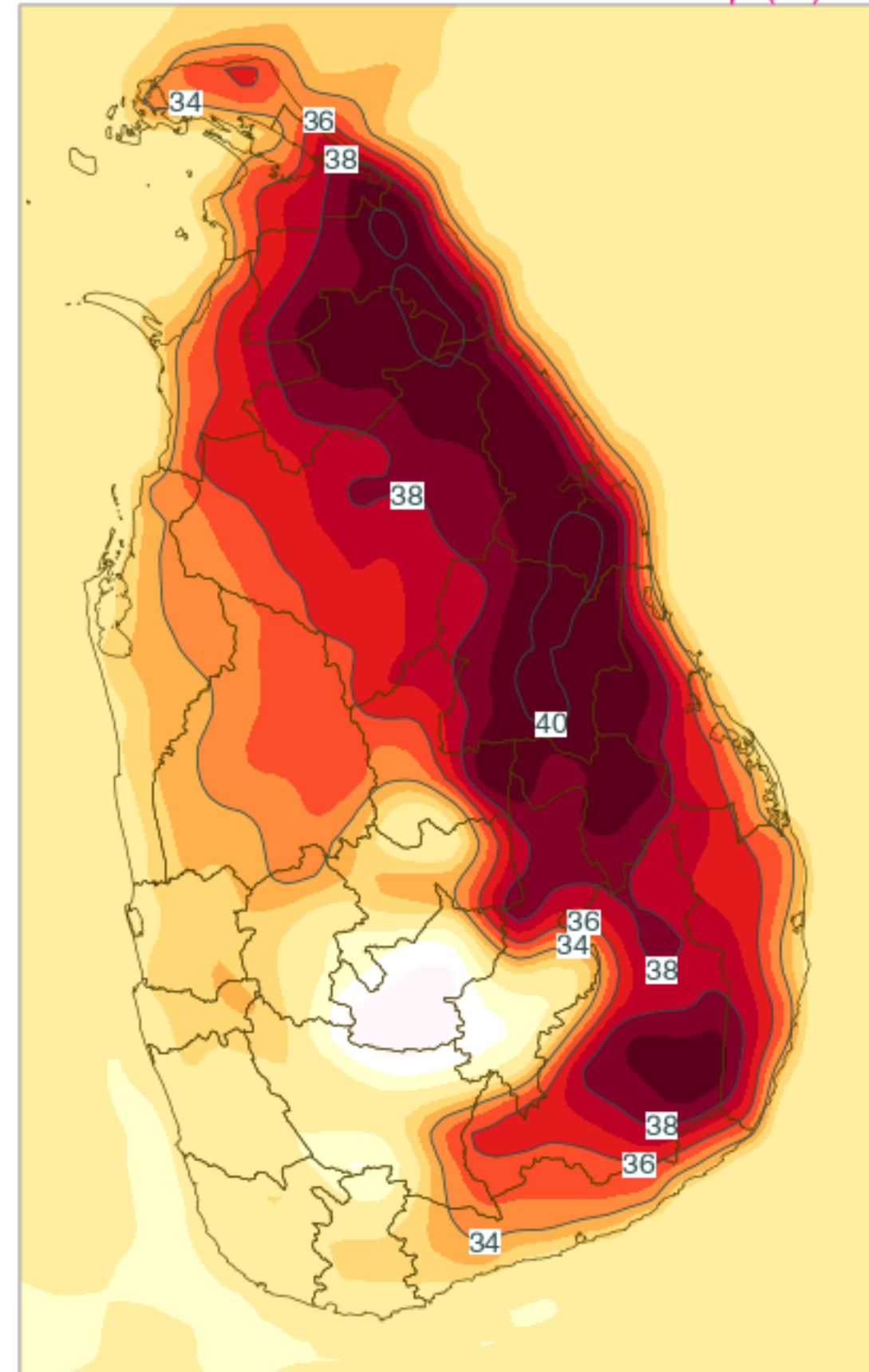
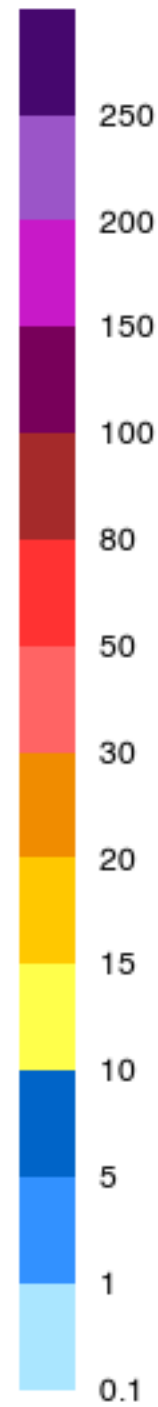
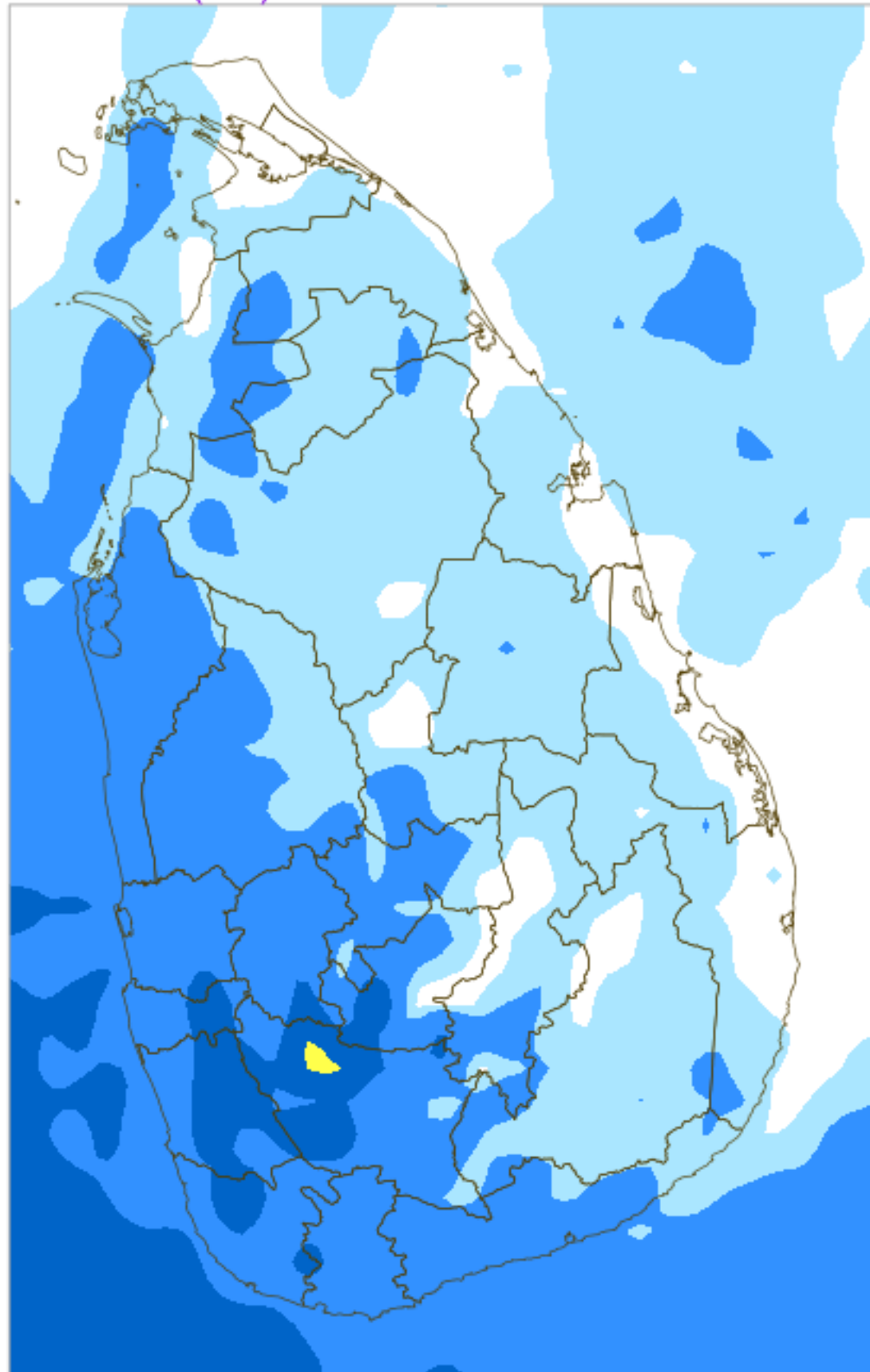
24H RAINFALL (mm) & MAXIMUM 2m TEMPERATURE (°C) FORECAST (24h)

For 24 hours ending at 8.30AM 07 MAY 2024

(Based on ECMWF (op1) model initialized at 12UTC 04 MAY 2024)

Rainfall (mm)

Max 2m Temp. (°C)



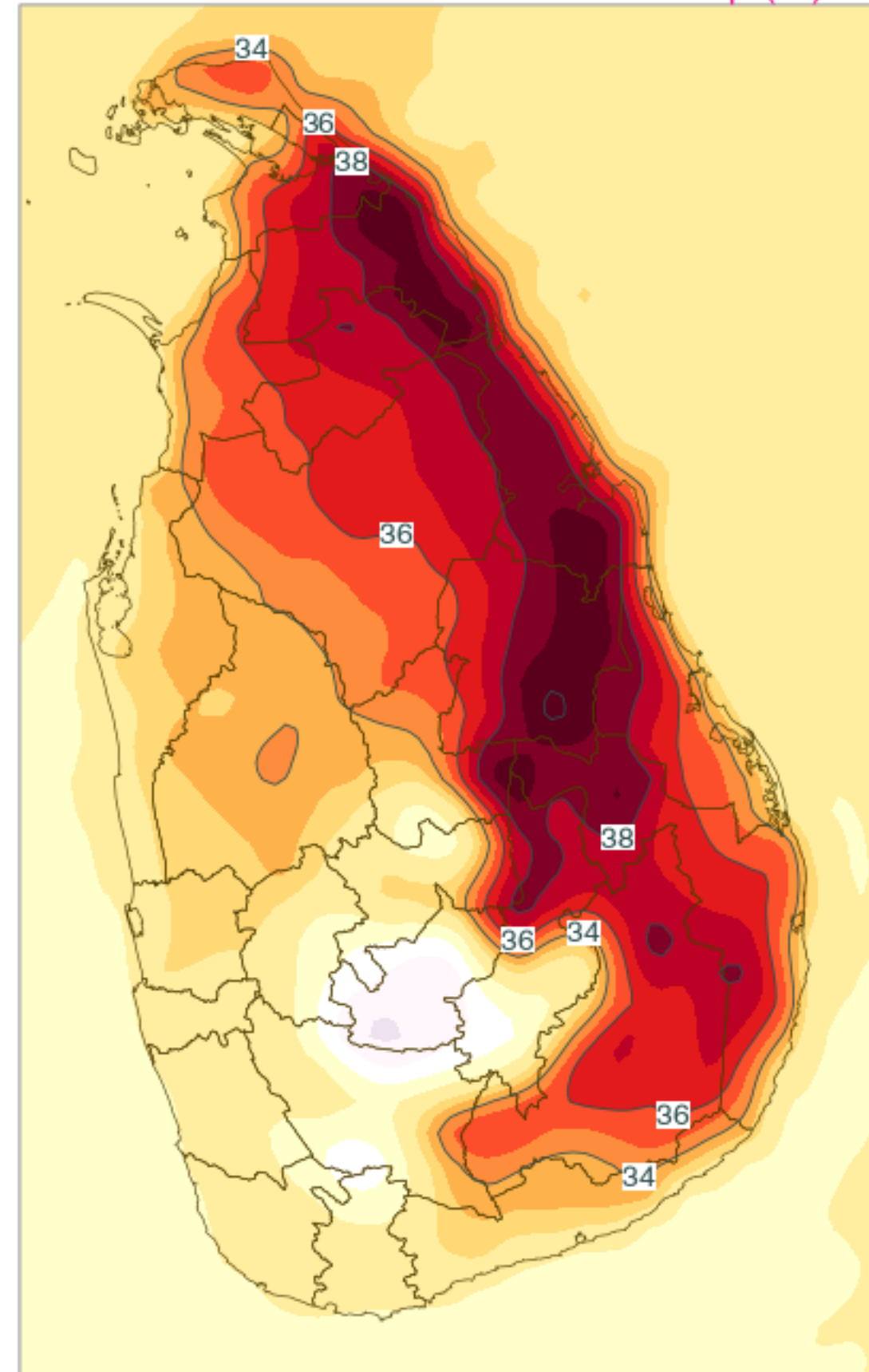
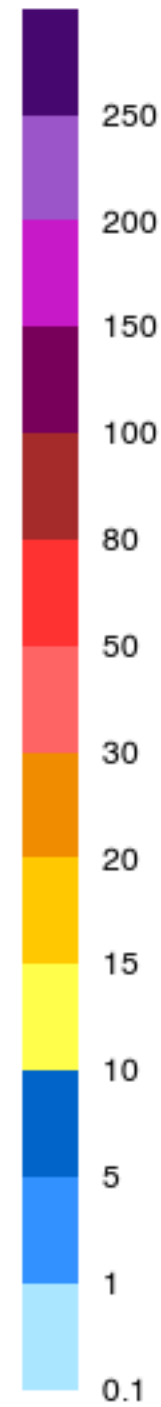
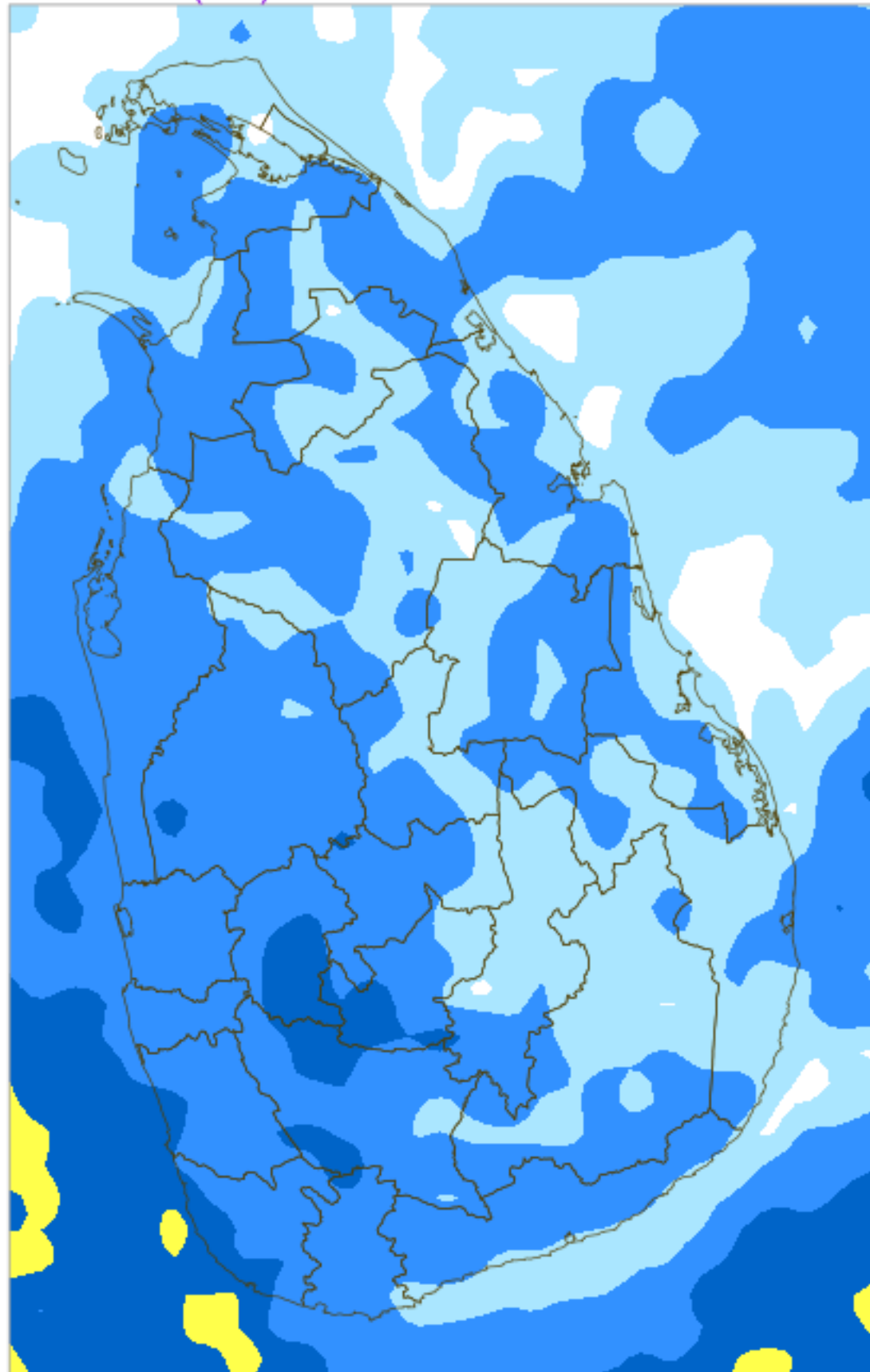
24H RAINFALL (mm) & MAXIMUM 2m TEMPERATURE (°C) FORECAST (24h)

For 24 hours ending at 8.30AM 08 MAY 2024

(Based on ECMWF (op1) model initialized at 12UTC 04 MAY 2024)

Rainfall (mm)

Max 2m Temp. (°C)



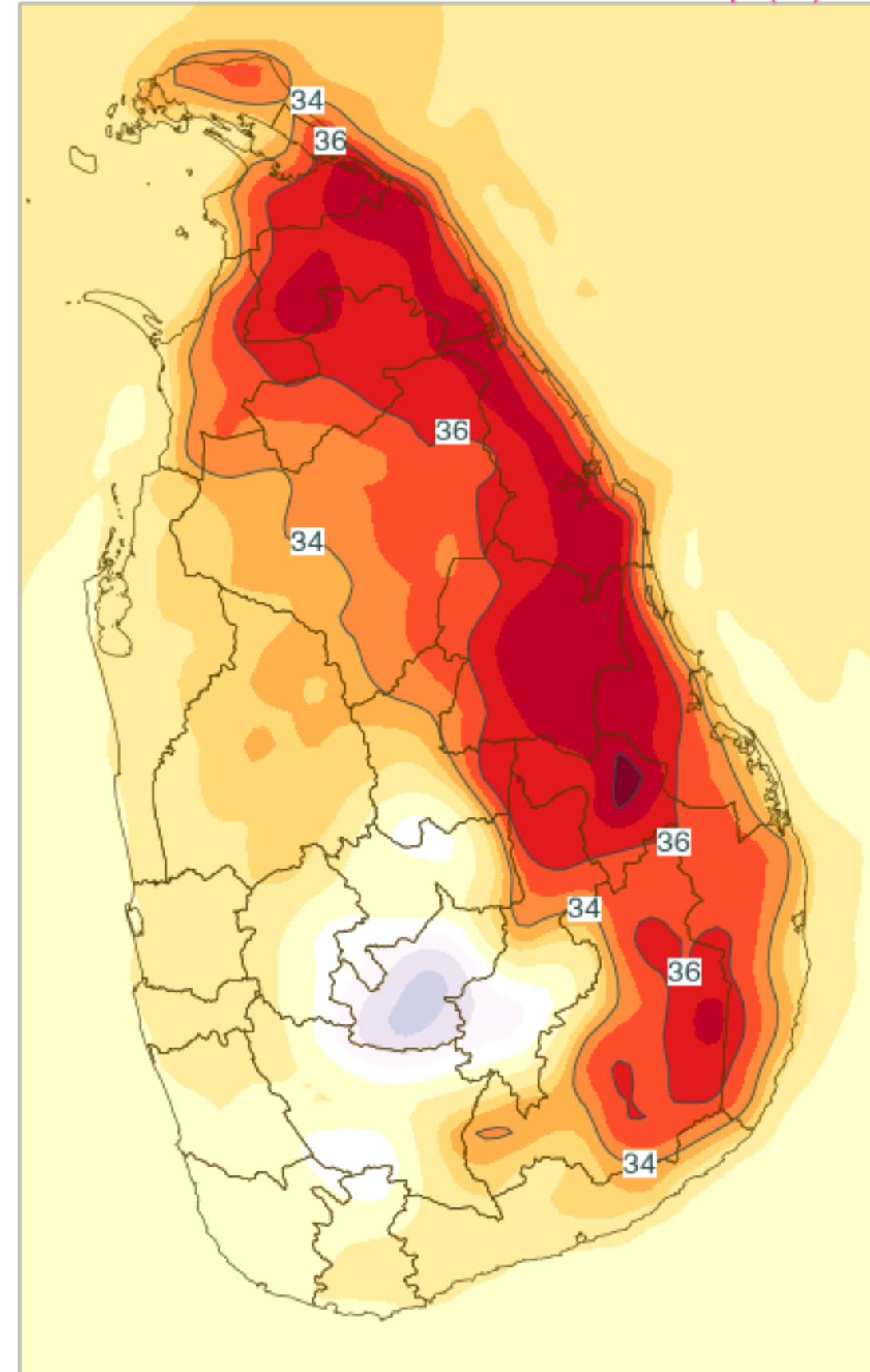
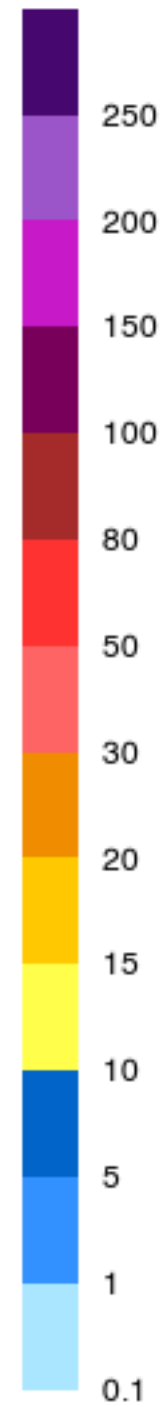
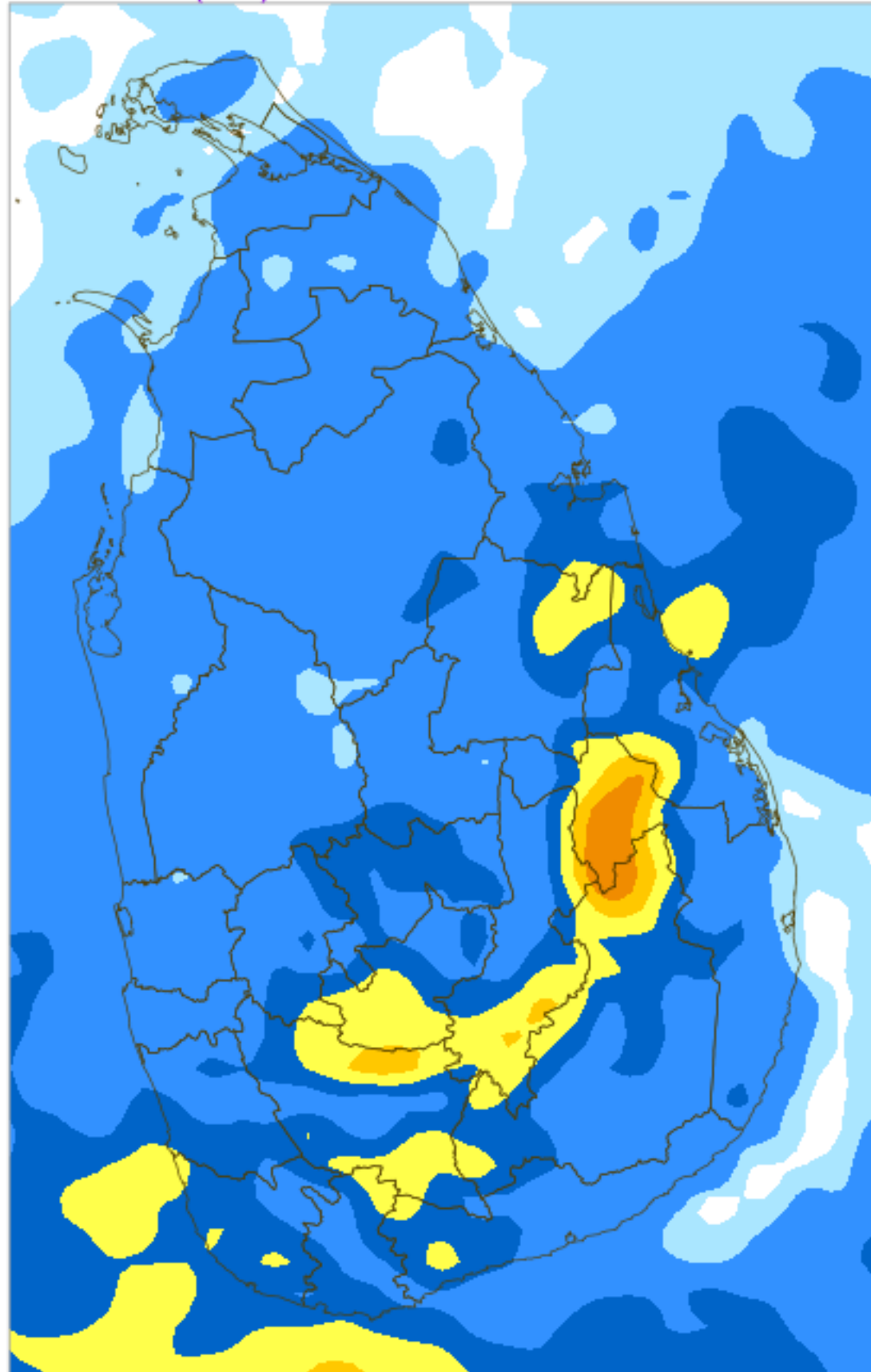
24H RAINFALL (mm) & MAXIMUM 2m TEMPERATURE (°C) FORECAST (24h)

For 24 hours ending at 8.30AM 09 MAY 2024

(Based on ECMWF (op1) model initialized at 12UTC 04 MAY 2024)

Rainfall (mm)

Max 2m Temp. (°C)



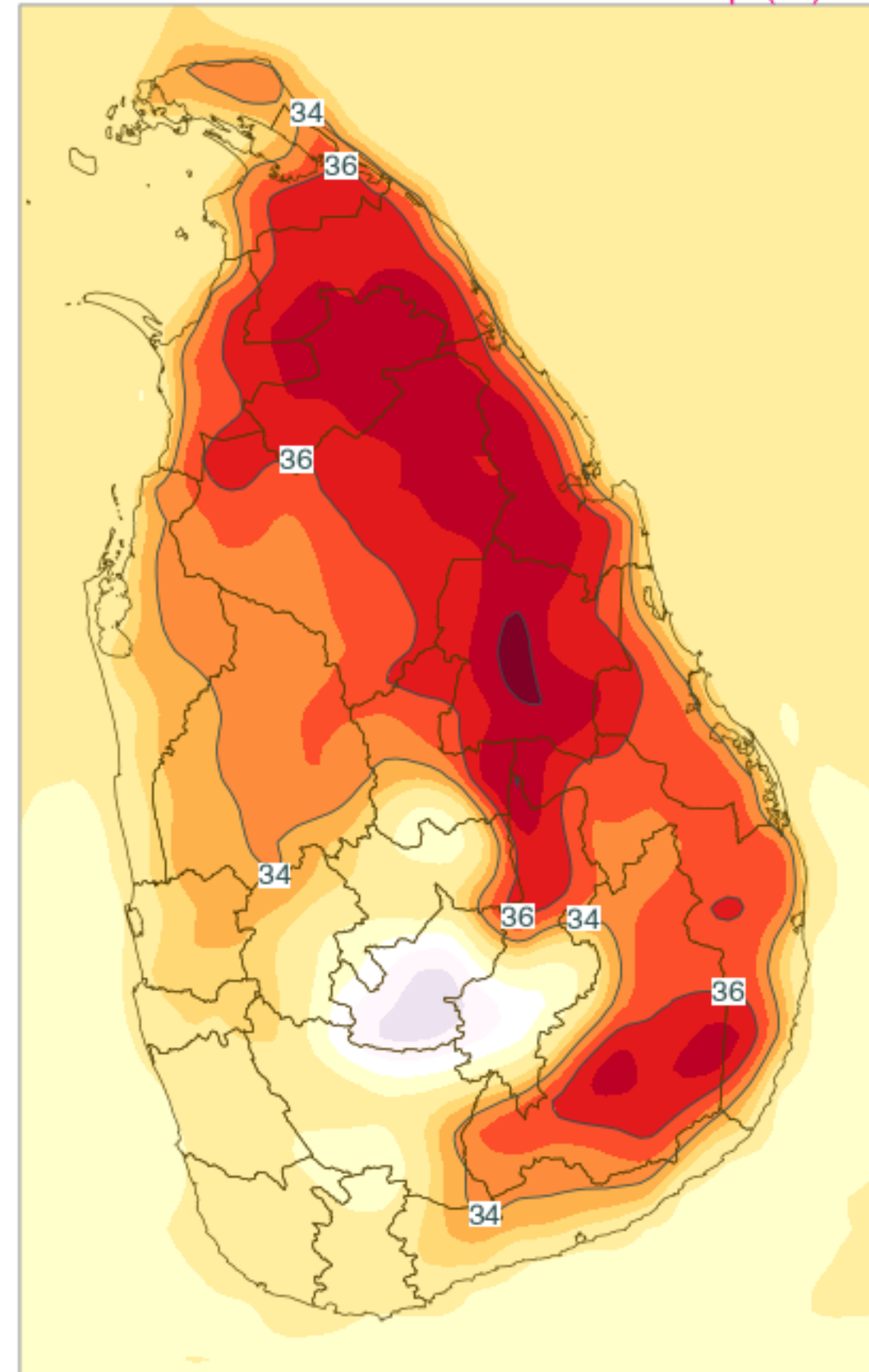
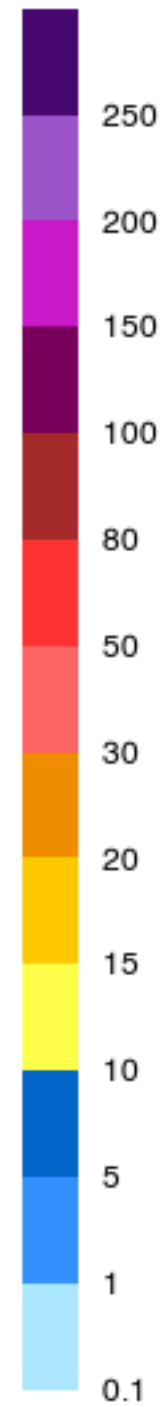
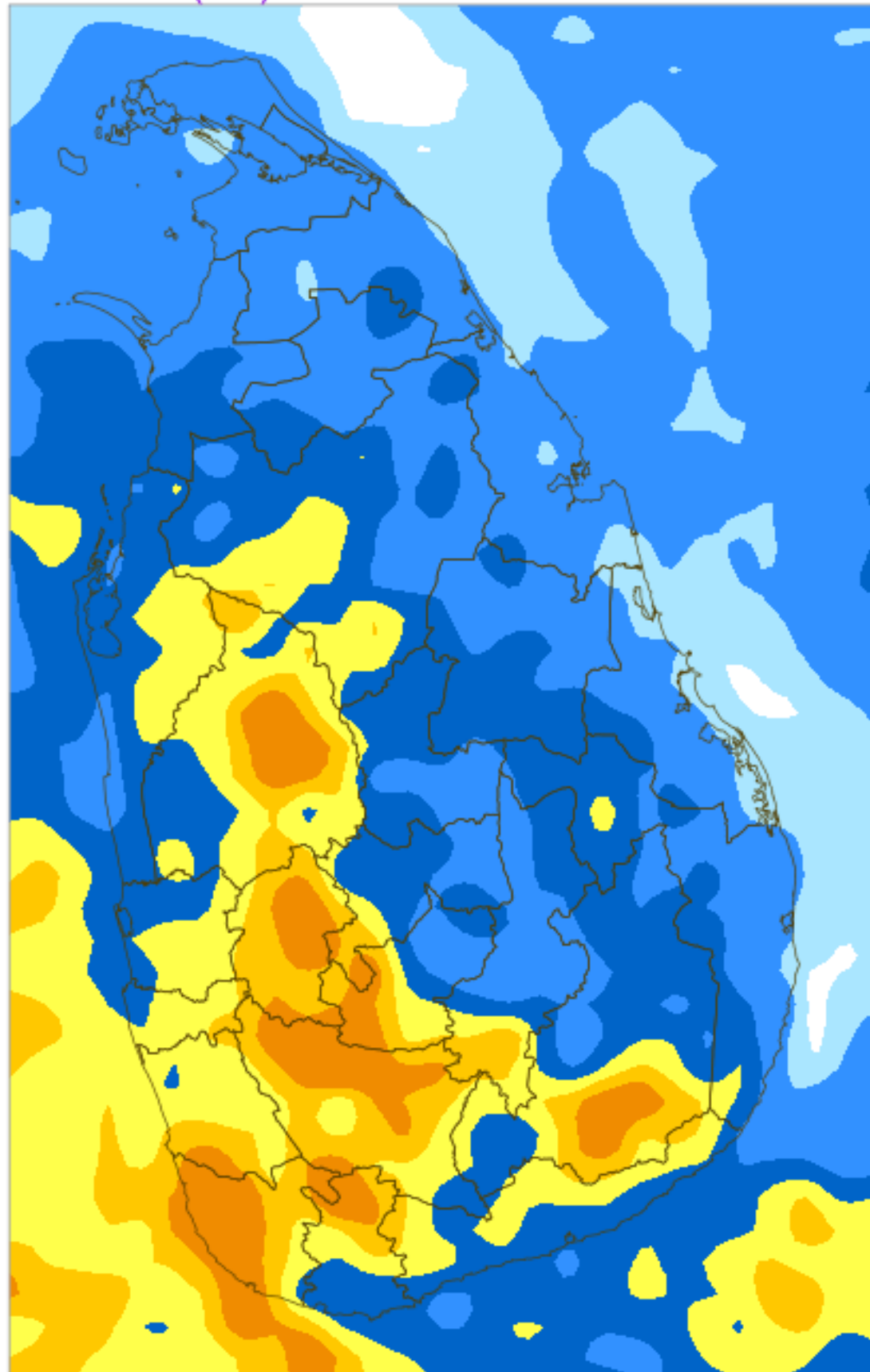
24H RAINFALL (mm) & MAXIMUM 2m TEMPERATURE (°C) FORECAST (24h)

For 24 hours ending at 8.30AM 10 MAY 2024

(Based on ECMWF (op1) model initialized at 12UTC 04 MAY 2024)

Rainfall (mm)

Max 2m Temp. (°C)



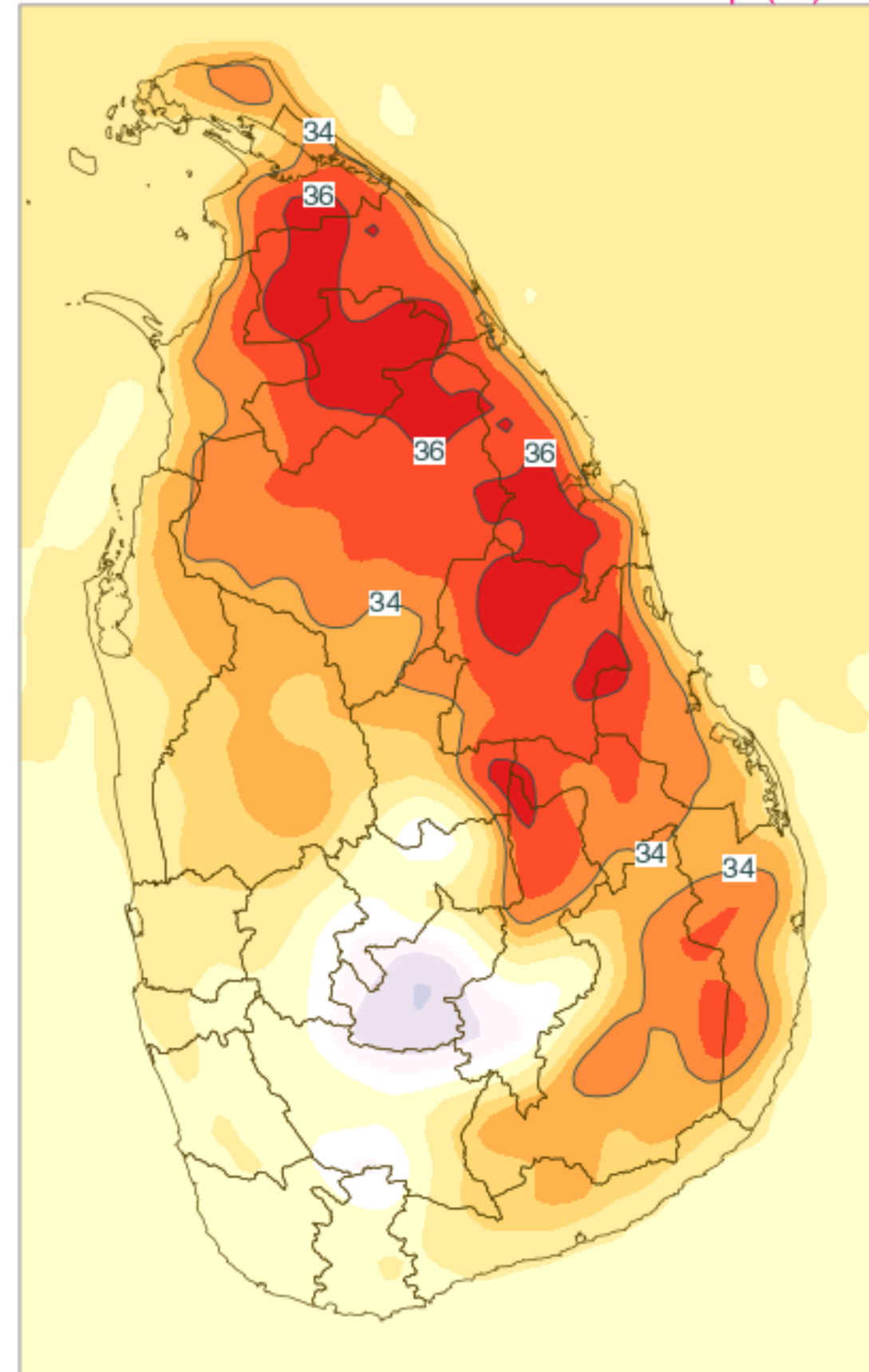
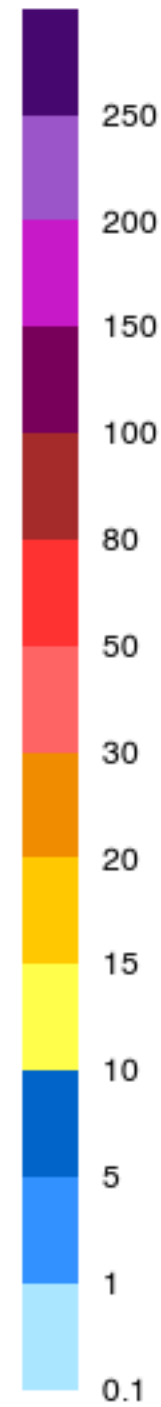
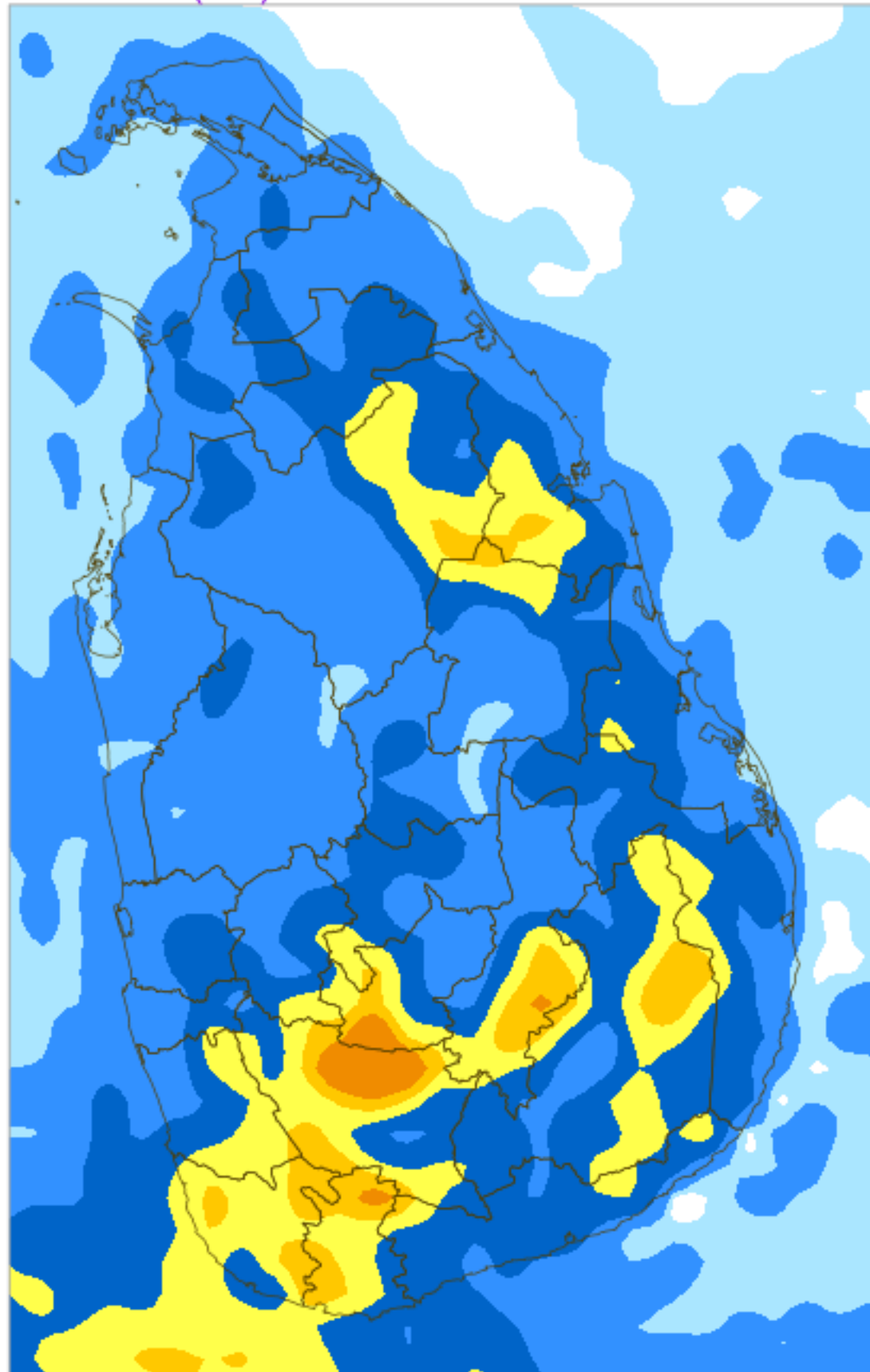
24H RAINFALL (mm) & MAXIMUM 2m TEMPERATURE (°C) FORECAST (24h)

For 24 hours ending at 8.30AM 11 MAY 2024

(Based on ECMWF (op1) model initialized at 12UTC 04 MAY 2024)

Rainfall (mm)

Max 2m Temp. (°C)



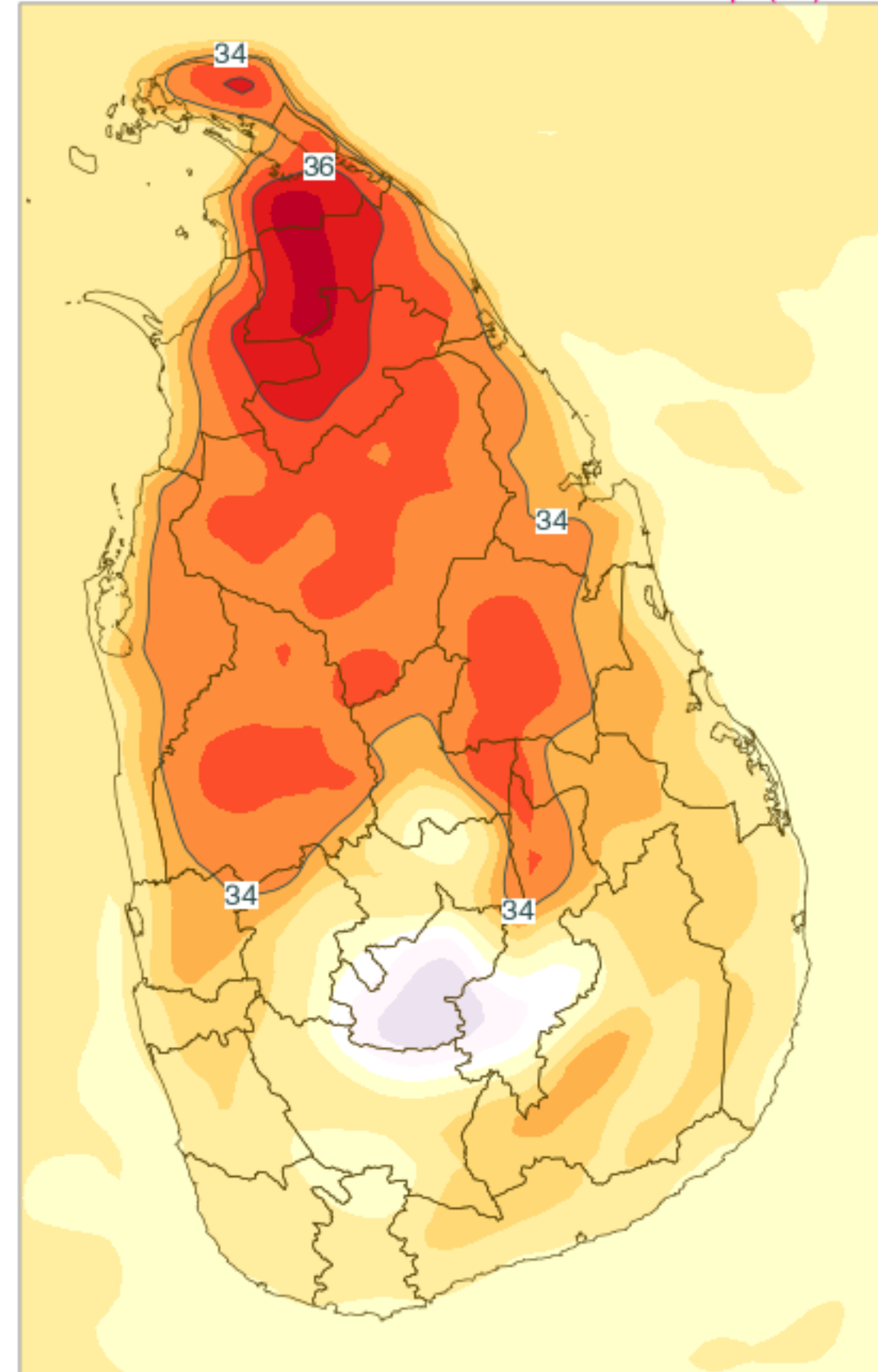
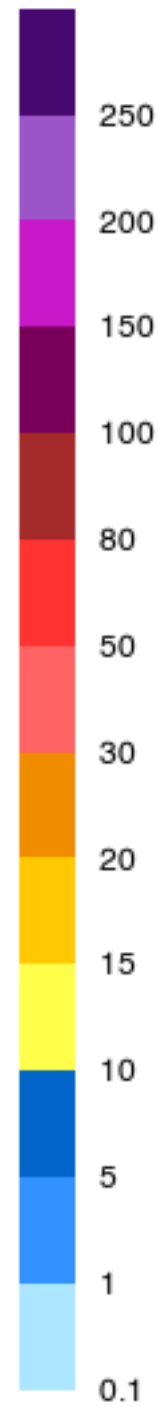
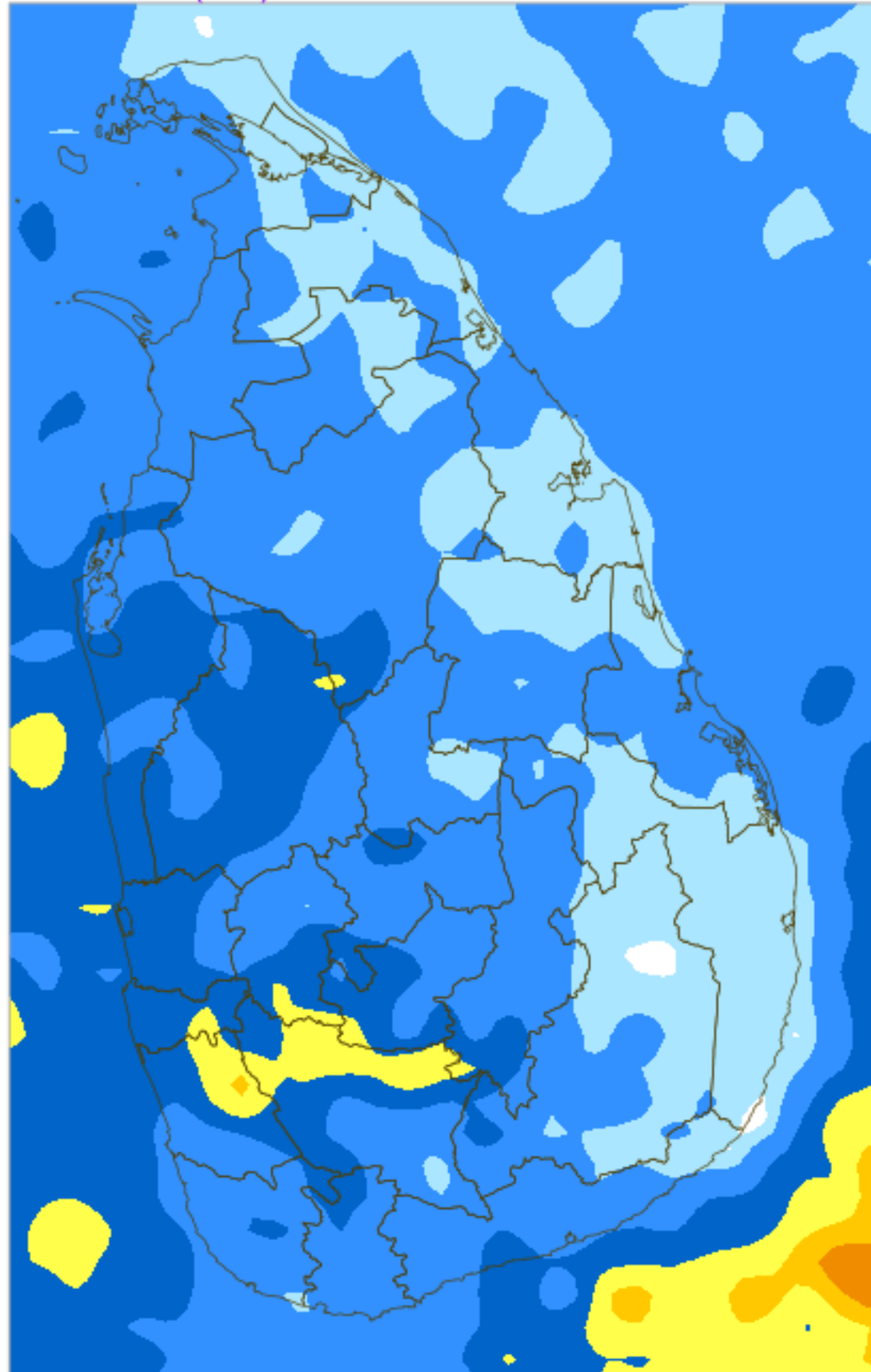
24H RAINFALL (mm) & MAXIMUM 2m TEMPERATURE (°C) FORECAST (24h)

For 24 hours ending at 8.30AM 12 MAY 2024

(Based on ECMWF (op1) model initialized at 12UTC 04 MAY 2024)

Rainfall (mm)

Max 2m Temp. (°C)



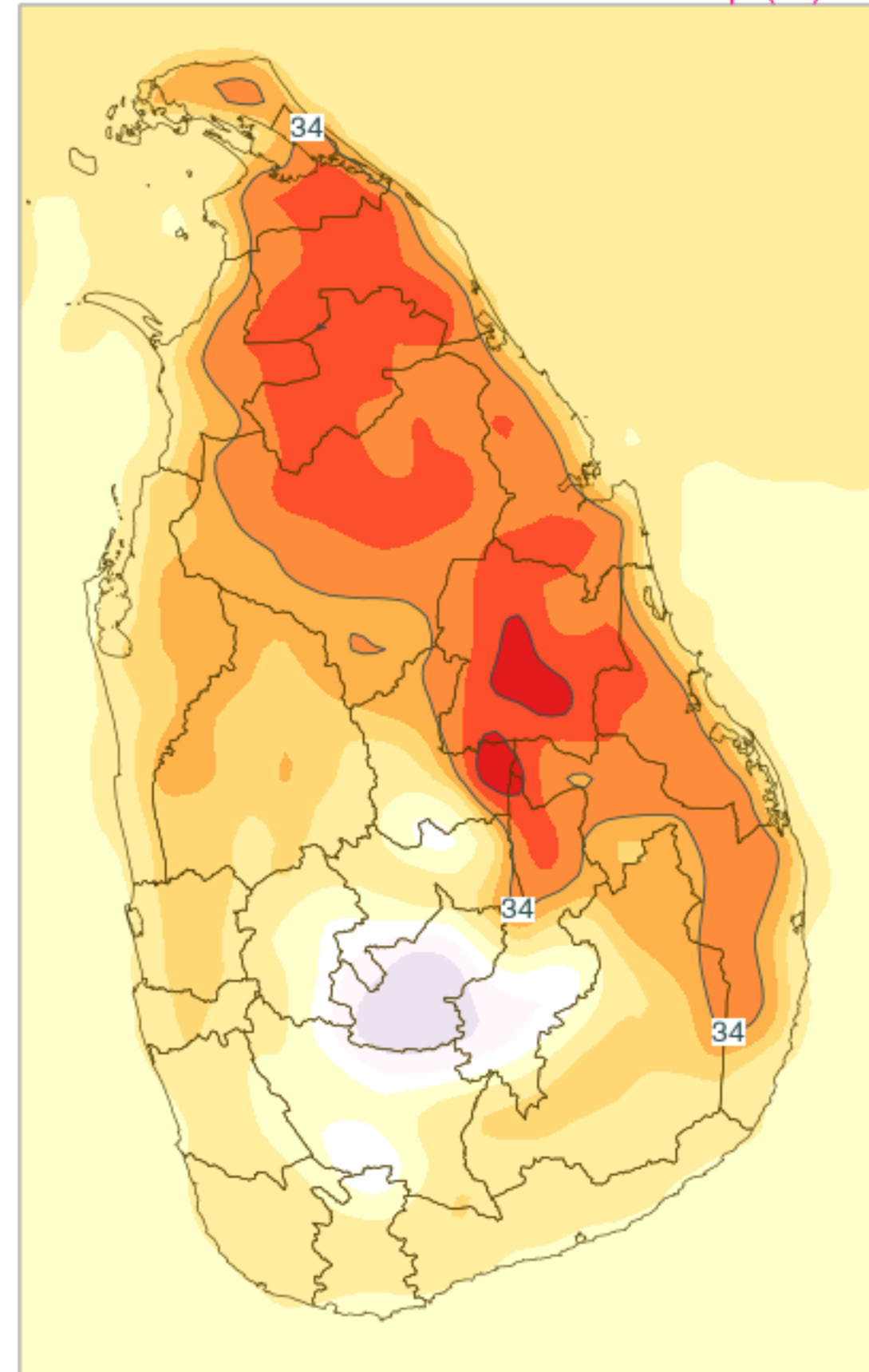
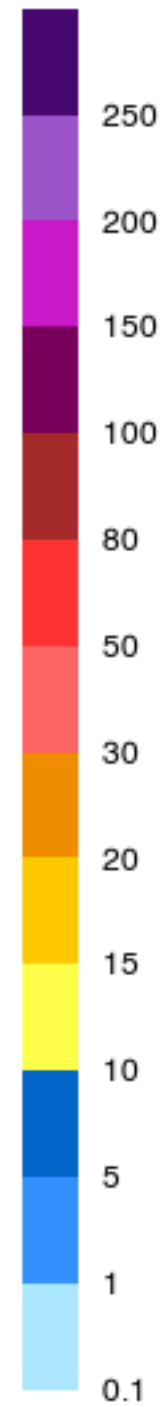
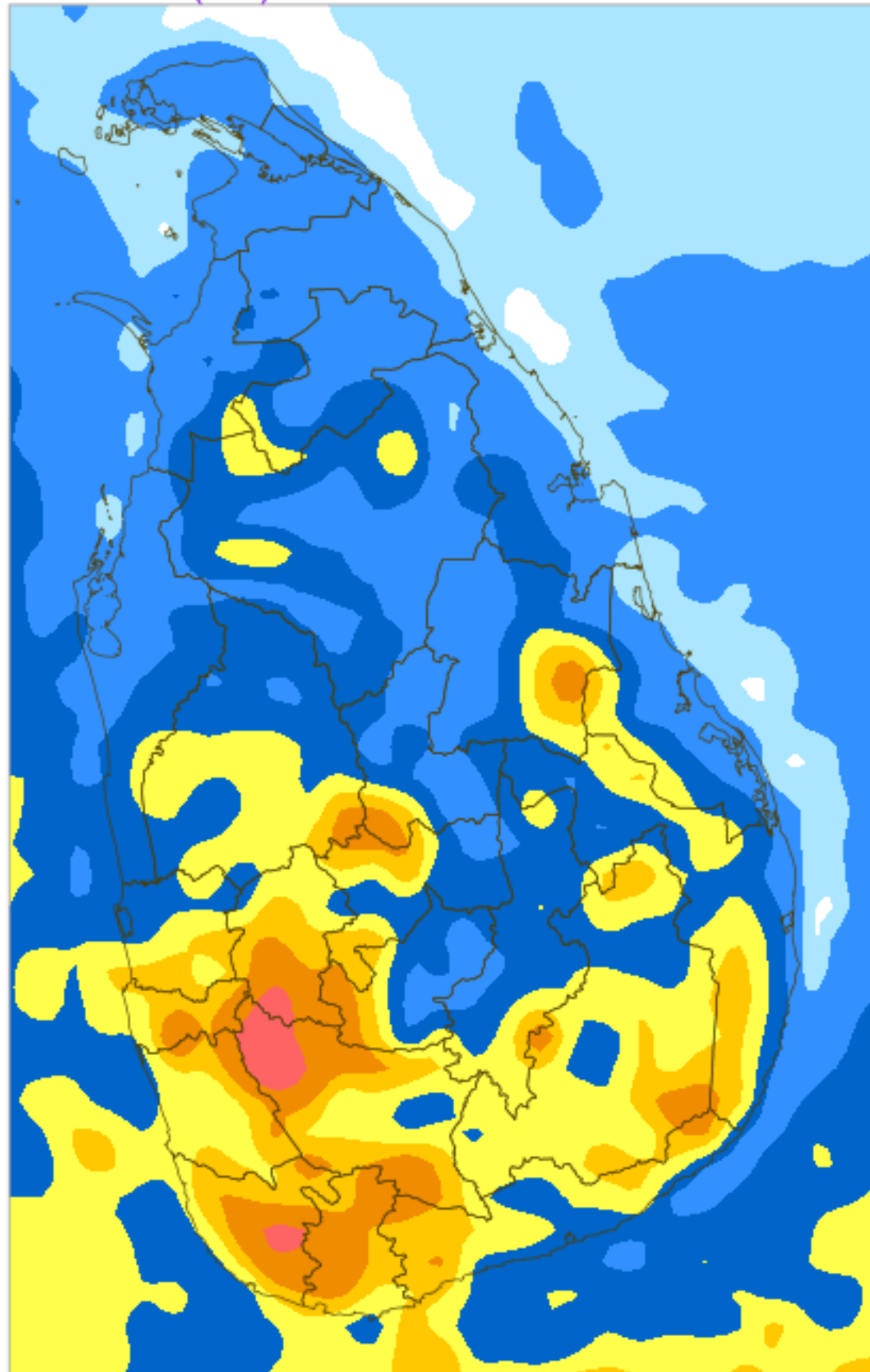
24H RAINFALL (mm) & MAXIMUM 2m TEMPERATURE (°C) FORECAST (24h)

For 24 hours ending at 8.30AM 13 MAY 2024

(Based on ECMWF (op1) model initialized at 12UTC 04 MAY 2024)

Rainfall (mm)

Max 2m Temp. (°C)



24H RAINFALL (mm) & MAXIMUM 2m TEMPERATURE (°C) FORECAST (24h)

For 24 hours ending at 8.30AM 14 MAY 2024

(Based on ECMWF (op1) model initialized at 12UTC 04 MAY 2024)

Rainfall (mm)

Max 2m Temp. (°C)

