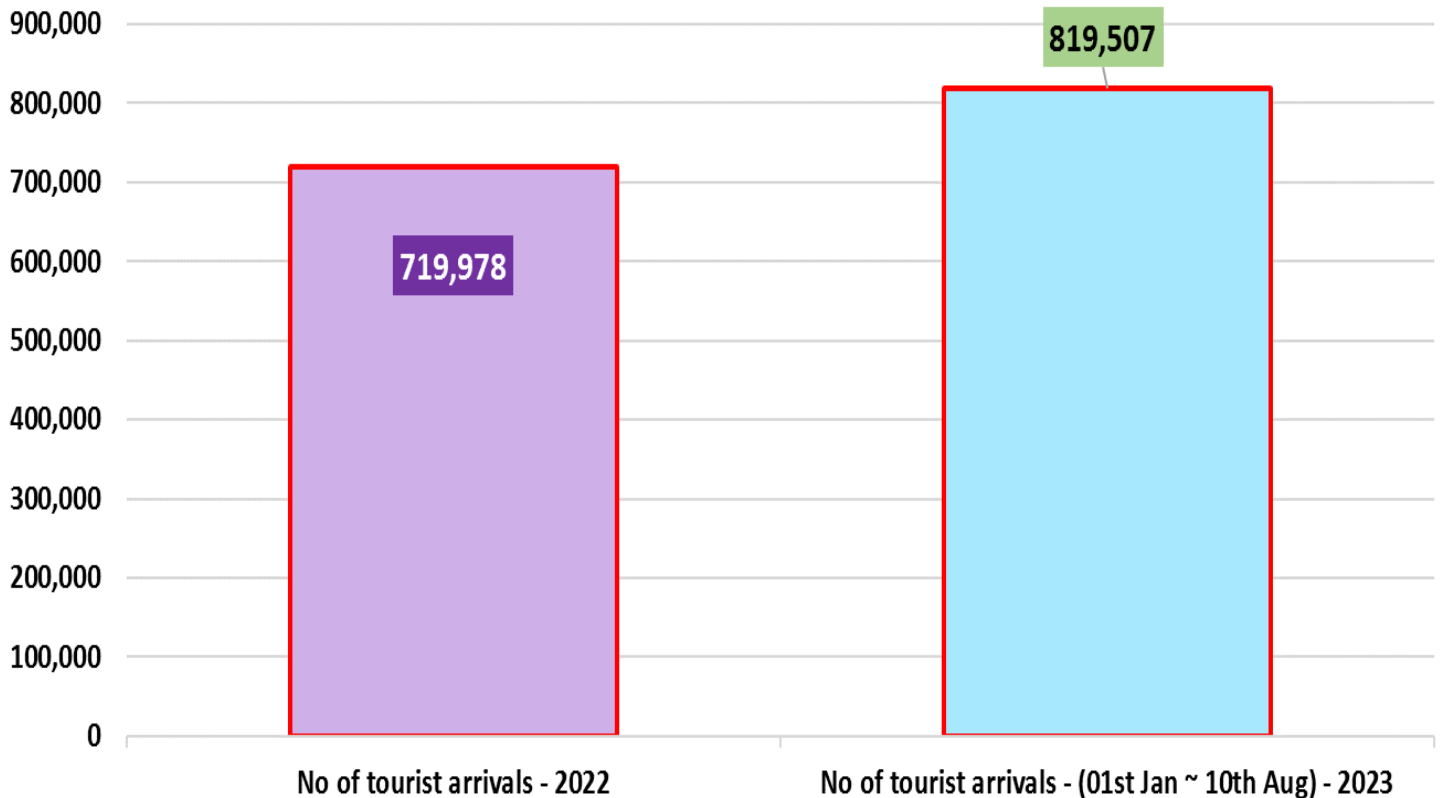


Summary report on tourist arrivals up to 10th August 2023

2022		2023		
Month	Number of Tourists	Month	Number of Tourists	percentage Change (23/22) %
January	82,327	January	102,545	24.6
February	96,507	February	107,639	11.5
March	106,500	March	125,495	17.8
April	62,980	April	105,498	67.5
May	30,207	May	83,309	175.8
June	32,856	June	100,388	205.5
July	47,293	July	143,039	202.4
August	37,760	August (01 ~ 10)	51,594	
September	29,802			
October	42,026			
November	59,759			
December	91,961			
Total	719,978		819,507	

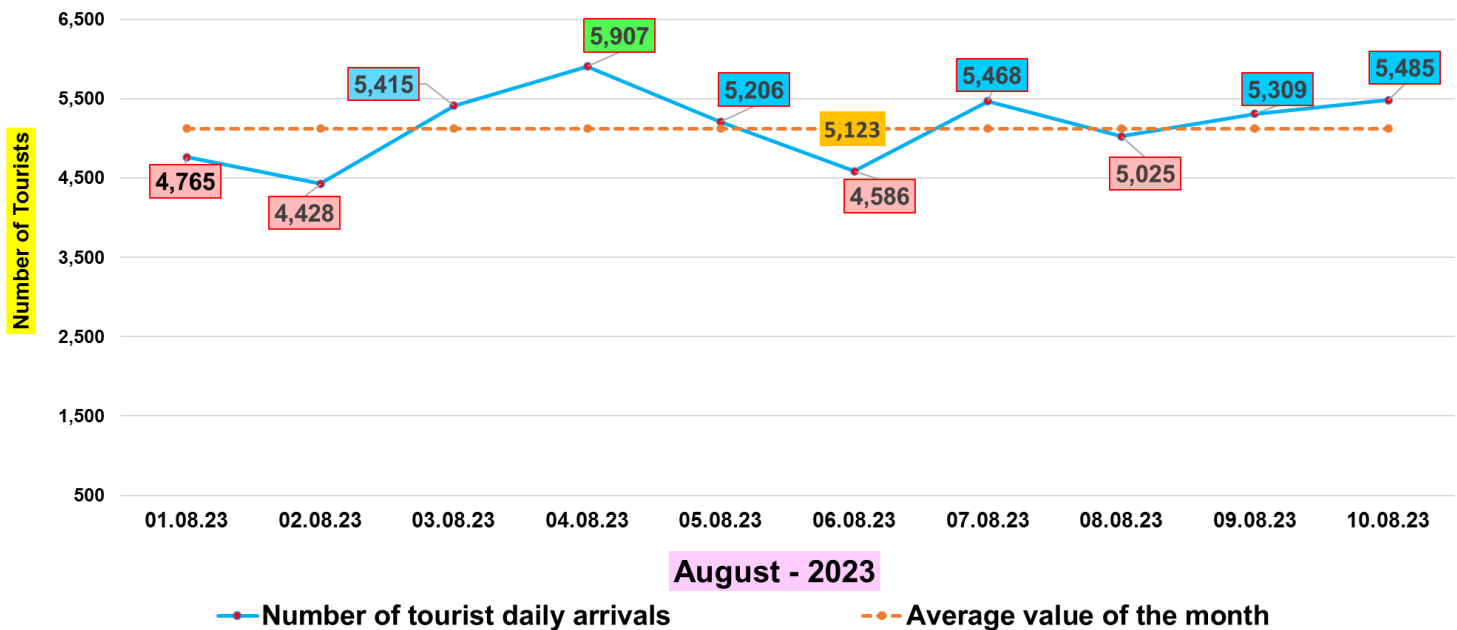
Number of tourist arrivals - 2022 & 2023 (up to 10th Aug)



Number of tourists arrivals – August (01st ~ 10th) 2023

Date	Number of Tourists
01.08.23	4,765
02.08.23	4,428
03.08.23	5,415
04.08.23	5,907
05.08.23	5,206
06.08.23	4,586
07.08.23	5,468
08.08.23	5,025
09.08.23	5,309
10.08.23	5,485
Total	51,594

Daily distribution of tourist arrivals , August 2023



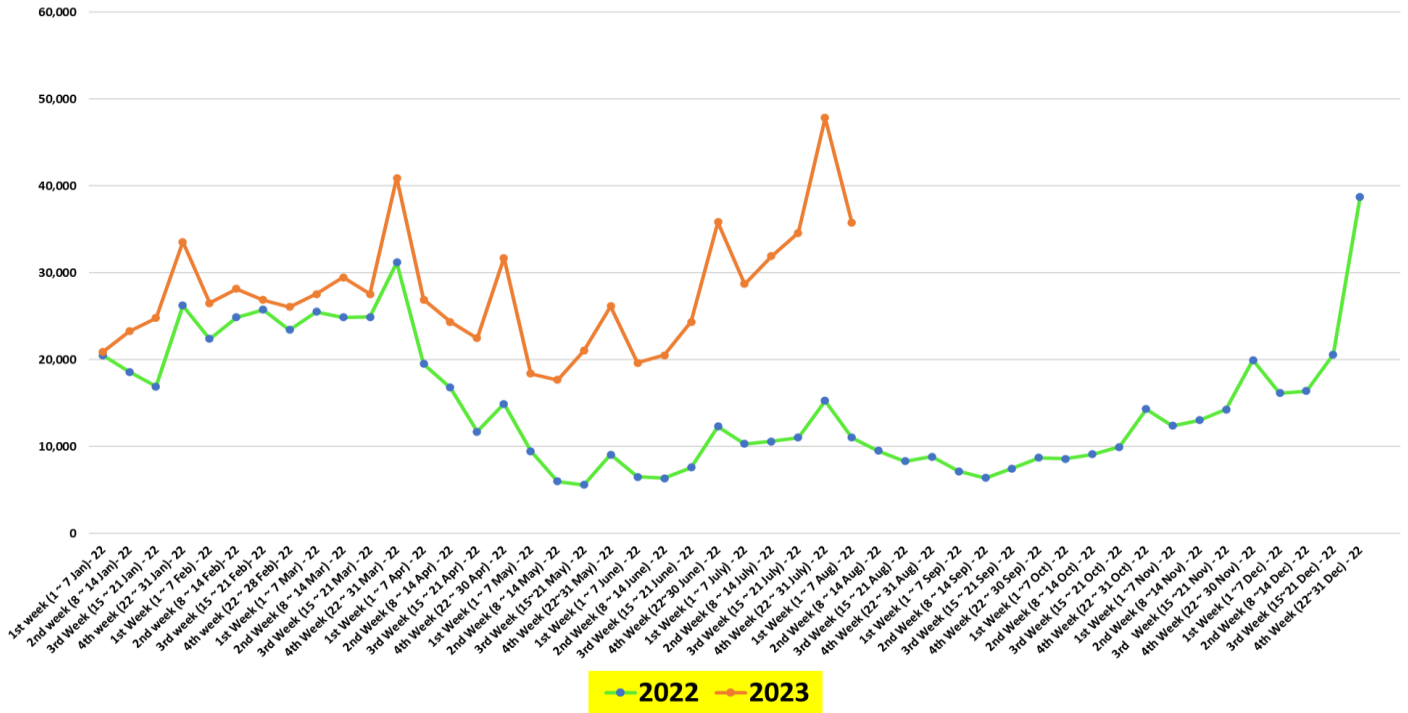
Weekly tourist arrival distribution- from January 2022 to August 2023

Week	Number of tourists	Total
1 st week (1 ~ 7 Jan)- 22	20,544	82,327
2 nd week (8 ~ 14 Jan)- 22	18,628	
3 rd Week (15 ~ 21 Jan) - 22	16,917	
4 th week (22 ~ 31 Jan)- 22	26,238	
1 st Week (1 ~ 7 Feb) - 22	22,411	96,507
2 nd week (8 ~ 14 Feb)- 22	24,871	
3 rd week (15 ~ 21 Feb)- 22	25,766	
4 th week (22 ~ 28 Feb)- 22	23,459	
1 st Week (1 ~ 7 Mar) - 22	25,507	106,500
2 nd Week (8 ~ 14 Mar) - 22	24,891	
3 rd Week (15 ~ 21 Mar) - 22	24,918	
4 th Week (22 ~ 31 Mar) - 22	31,184	

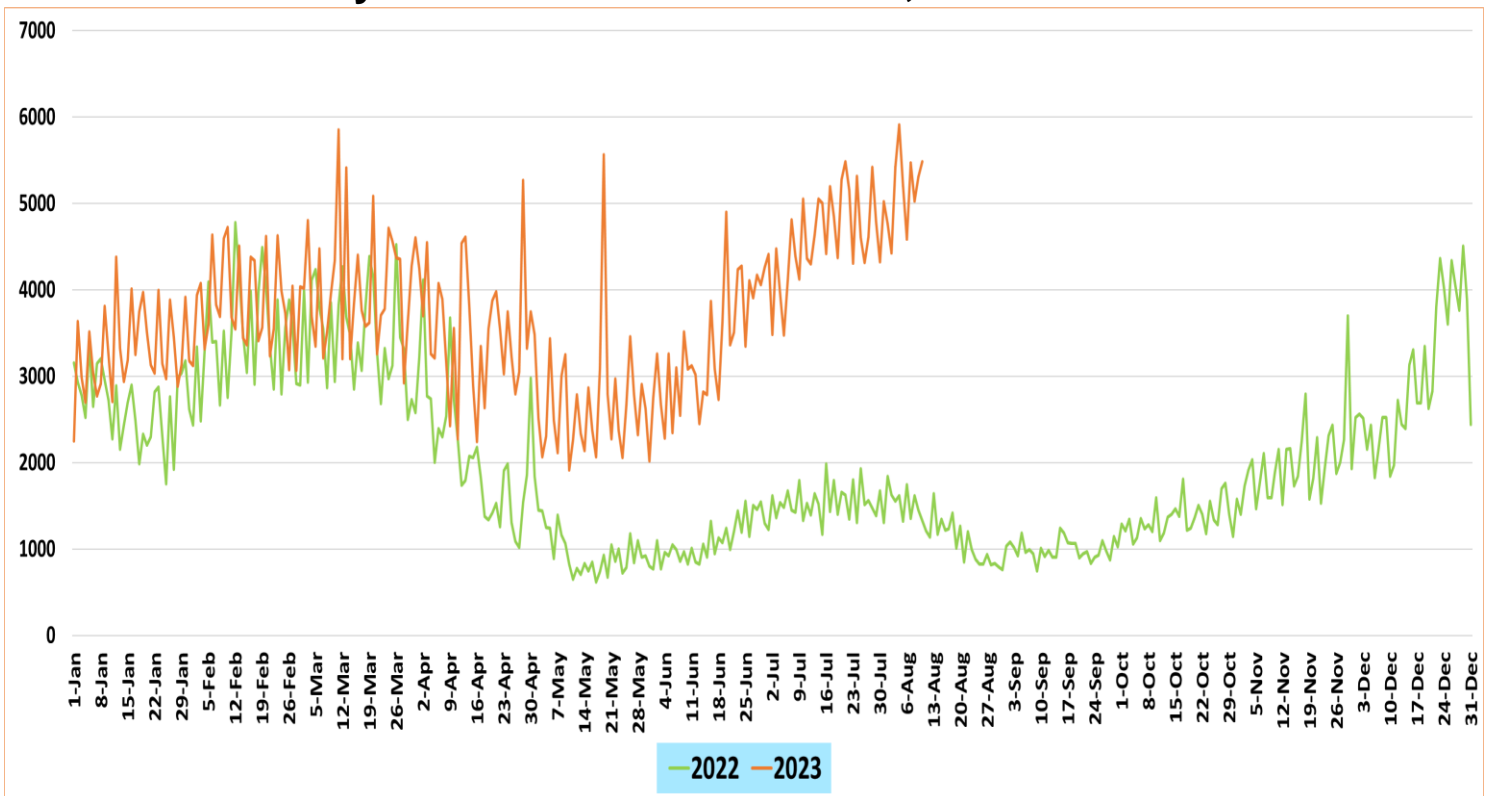
Week	Number of tourists	Total
1 st Week (1 ~ 7 Apr) - 22	19,523	62,980
2 nd Week (8 ~ 14 Apr) - 22	16,805	
3 rd Week (15 ~ 21 Apr) - 22	11,716	
4 th Week (22 ~ 30 Apr) - 22	14,936	
1 st Week (1 ~ 7 May) - 22	9,493	30,207
2 nd Week (8 ~ 14 May) - 22	6,009	
3 rd Week (15~21 May) - 22	5,600	
4 th Week (22~31 May) - 22	9,105	
1 st Week (1 ~ 7 June) - 22	6,555	32,856
2 nd Week (8 ~ 14 June) - 22	6,382	
3 rd Week (15 ~ 21 June) - 22	7,597	
4 th Week (22~30 June) - 22	12,322	
1 st Week (1 ~ 7 July) - 22	10,334	47,293
2 nd Week (8 ~ 14 July) - 22	10,622	
3 rd Week (15 ~ 21 July) - 22	11,056	
4 th Week (22 ~ 31 July) - 22	15,281	
1 st Week (1 ~ 7 Aug) - 22	11,046	37,760
2 nd Week (8 ~ 14 Aug) - 22	9,550	
3 rd Week (15 ~ 21 Aug) - 22	8,317	
4 th Week (22 ~ 31 Aug) - 22	8,847	
1 st Week (1 ~ 7 Sep) - 22	7,182	29,802
2 nd Week (8 ~ 14 Sep) - 22	6,408	
3 rd Week (15 ~ 21 Sep) - 22	7,478	
4 th Week (22 ~ 30 Sep) - 22	8,734	
1 st Week (1 ~7 Oct) - 22	8,614	42,026
2 nd Week (8 ~ 14 Oct) - 22	9,125	
3 rd Week (15 ~ 21 Oct) - 22	9,968	
4 th Week (22 ~ 31 Oct) - 22	14,319	
1 st Week (1 ~7 Nov) - 22	12,431	59,759
2 nd Week (8 ~14 Nov) - 22	13,051	
3 rd Week (15 ~21 Nov) - 22	14,298	
4 th Week (22 ~ 30 Nov) - 22	19,979	
1 st Week (1 ~7 Dec) - 22	16,169	91,961
2 nd Week (8 ~14 Dec) - 22	16,418	
3 rd Week (15~21 Dec) - 22	20,610	
4 th Week (22~31 Dec) - 22	38,764	
Year - 2023		
1 st week (1 ~ 7 Jan)- 23	20,875	102,545
2 nd week (8 ~ 14 Jan)- 23	23,295	
3 rd week (15 ~ 21 Jan)- 23	24,796	
4 th week (22 ~ 31 Jan)- 23	33,579	
1 st week (1 ~ 7 Feb)- 23	26,506	107,639
2 nd week (8 ~ 14 Feb)- 23	28,179	
3 rd week (15 ~ 21 Feb)- 23	26,886	
4 th week (22 ~ 31 Feb)- 23	26,068	
1 st week (1 ~ 7 Mar)- 23	27,573	125,495
2 nd week (8 ~ 14 Mar)- 23	29,464	
3 rd week (15 ~ 21 Mar)- 23	27,546	
4 th week (22 ~ 31 Mar)- 23	40,912	
1 st week (1 ~ 7 Apr)- 23	26,911	105,498
2 nd week (8 ~ 14 Apr)- 23	24,362	
3 rd week (15 ~ 21 Apr)- 23	22,506	
4 th week (22 ~ 30 Apr) - 23	31,719	
1 st week (1 ~ 7 May) - 23	18,401	83,309
2 nd week (8 ~ 14 May) - 23	17,699	
3 rd week (15 ~ 21 May) - 23	21,030	
4 th week (22 ~ 31 May) - 23	26,179	
1 st week (1 ~ 7 June) - 23	19,656	100,388
2 nd week (8 ~ 14 June) - 23	20,541	
3 rd week (15 ~ 21 June) - 23	24,346	
4 th week (22 ~30 June) - 23	35,845	

Week	Number of tourists	Total
1 st week (1 ~ 7 July) - 23	28,711	143,039
2 nd week (8 ~ 14 July) - 23	31,902	
3 rd week (15 ~ 21 July) - 23	34,594	
4 th week (22 ~ 31 July) - 23	47,832	
1 st week (1 ~ 7 August) - 23	35,775	51,594
2 nd week (8 ~ 10 August) - 23	15,819	

Weekly distribution of tourist arrivals – 2022 & 2023

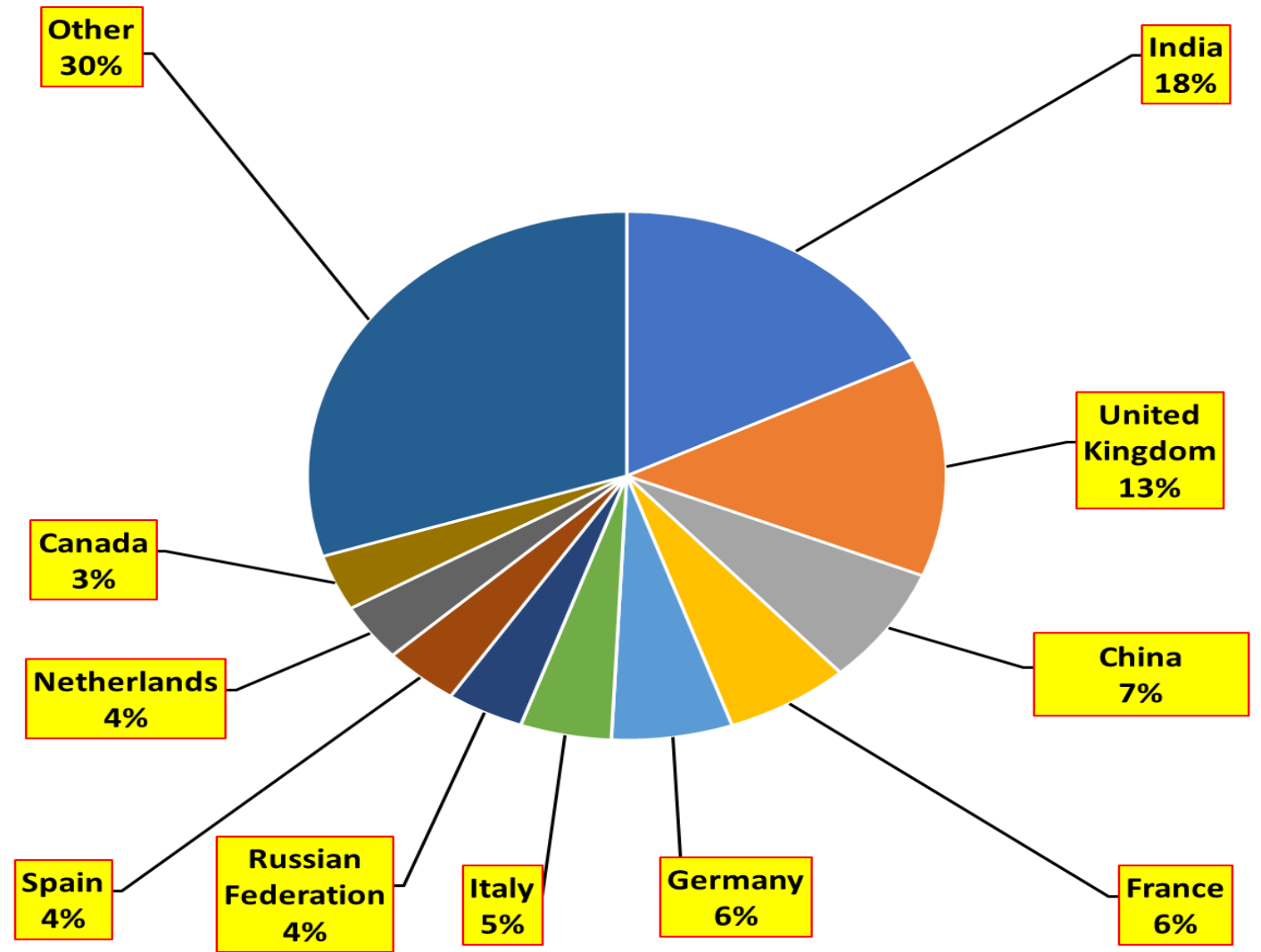


Daily trend of tourists arrivals , 2022 & 2023



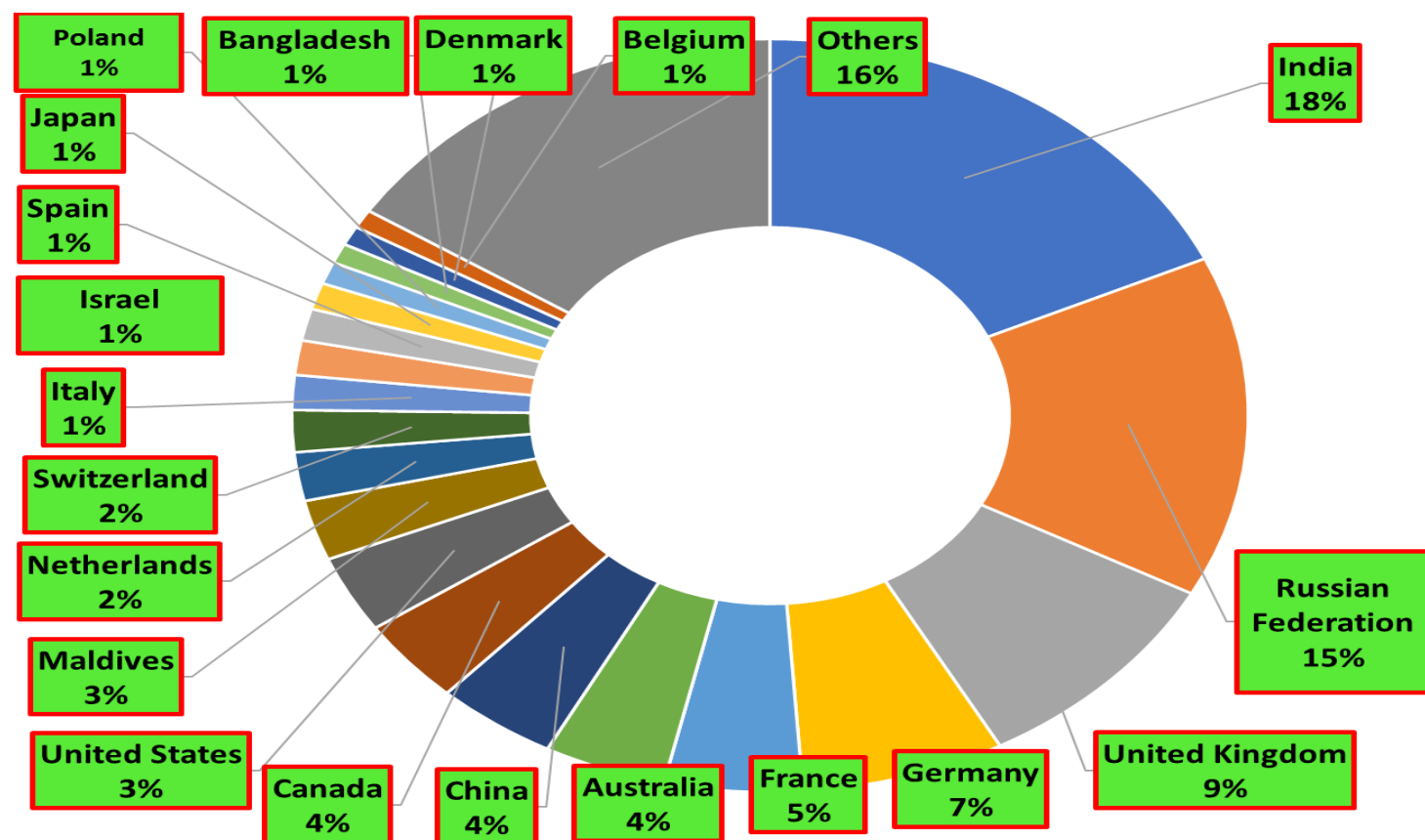
Top ten source markets - August (1 ~ 10) - 2023

Rank	Country	Number of tourists
1	India	9,146
2	United Kingdom	6,939
3	China	3,707
4	France	3,249
5	Germany	3,155
6	Italy	2,385
7	Russian Federation	2,015
8	Spain	1,965
9	Netherlands	1,818
10	Canada	1,774
11	Other	15,441
	TOTAL	51,594

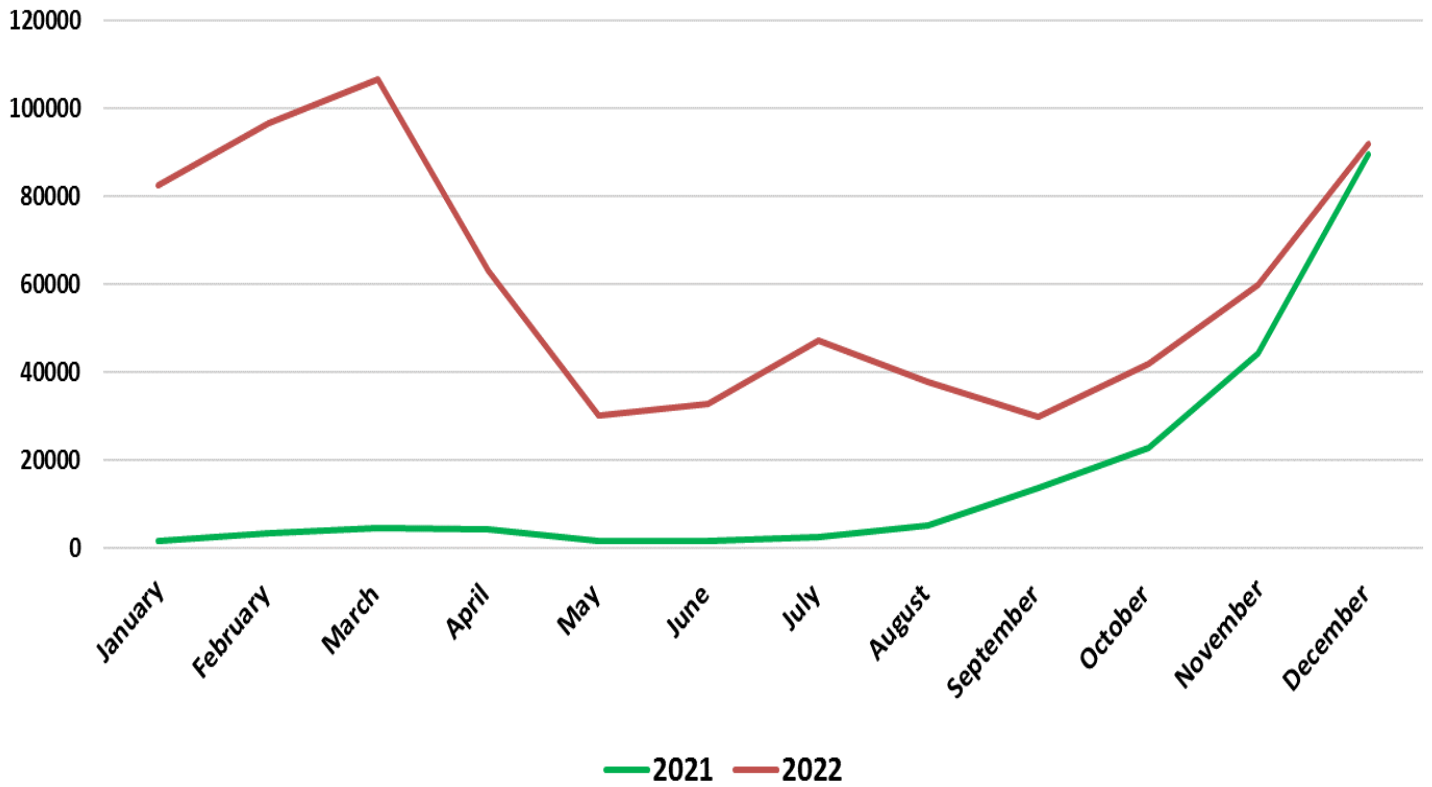


Top twenty source markets – 01st Jan ~ 10th Aug 2023

Rank	Country	Number of tourists
1	India	148,800
2	Russian Federation	120,299
3	United Kingdom	75,243
4	Germany	56,365
5	France	38,269
6	Australia	33,923
7	China	33,631
8	Canada	29,937
9	United States	27,082
10	Maldives	21,215
11	Netherlands	17,109
12	Switzerland	14,692
13	Italy	12,242
14	Israel	12,151
15	Spain	11,173
16	Japan	9,343
17	Poland	7,828
18	Bangladesh	6,991
19	Denmark	6,763
20	Belgium	6,587
	Others	129,864
	TOTAL	819,507



Number of tourist arrivals by month 2021 & 2022



Number of tourist arrivals from top twenty source markets – 2018 & 2019

